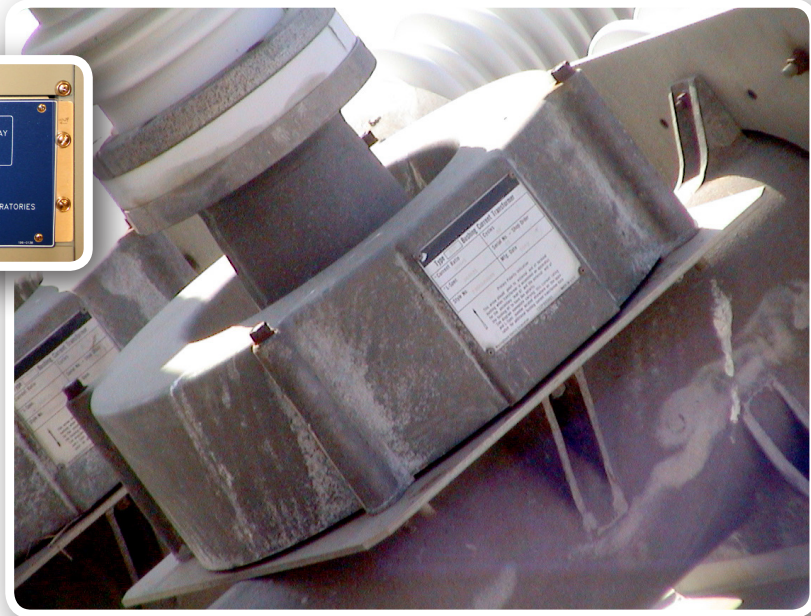
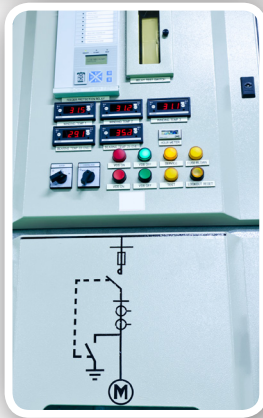


# System Protection Overview

Instructor-Led Training



This instructor-led class provides a fundamental understanding of protective relaying design and corresponding philosophies associated with the BES. Students will learn the key aspects of protective relaying for maintaining the reliability of the Interconnection and its related equipment. Discussion of the NERC PRC Standards and utility protection engineering best practices provides relevant information that is practiced and demonstrated through computer simulations.

## Students completing this class will learn:

- NERC PRC Standards overview
- Protective relaying philosophy
- Generator protection
- Transformer protection schemes
- Line protection
- Bus protection
- Remedial action schemes

Use of the PowerSimulator will enable participants to develop and test their knowledge and skill in protective relaying.

This class is designed for power system operators and operating support personnel.

## CREDIT HOURS:

8:CEH 3:SIM



10715 Sikes Place, Charlotte NC 28277

**877.767.4685**

**Melanie Payne** : 704.815.7906  
melanie.payne@sosintl.com

**Lori Burk** : 704.815.7907  
lori.burk@sosintl.com

**Kathy Cross** : 704.815.7909  
kathy.cross@sosintl.com

**NERC**  
NORTH AMERICAN ELECTRIC  
RELIABILITY CORPORATION

SOS Intl. and NERC ID SOS\_INTL\_001 is recognized by the North American Electric Reliability Corporation as a continuing education provider who adheres to NERC Continuing Education Program Criteria.